



**Large Deployment of
SuperDoctor 5 on Windows
User's Guide**

Revision 1.0d

The information in this USER'S MANUAL has been carefully reviewed and is believed to be accurate. The vendor assumes no responsibility for any inaccuracies that may be contained in this document, makes no commitment to update or to keep current the information in this manual, or to notify any person organization of the updates. Please Note: For the most up-to-date version of this manual, please see our web site at www.supermicro.com.

Super Micro Computer, Inc. ("Supermicro") reserves the right to make changes to the product described in this manual at any time and without notice. This product, including software, if any, and documentation may not, in whole or in part, be copied, photocopied, reproduced, translated or reduced to any medium or machine without prior written consent.

IN NO EVENT WILL SUPERMICRO BE LIABLE FOR DIRECT, INDIRECT, SPECIAL, INCIDENTAL, SPECULATIVE OR CONSEQUENTIAL DAMAGES ARISING FROM THE USE OR INABILITY TO USE THIS PRODUCT OR DOCUMENTATION, EVEN IF ADVISED OF THE POSSIBILITY OF SUCH DAMAGES. IN PARTICULAR, SUPERMICRO SHALL NOT HAVE LIABILITY FOR ANY HARDWARE, SOFTWARE, OR DATA STORED OR USED WITH THE PRODUCT, INCLUDING THE COSTS OF REPAIRING, REPLACING, INTEGRATING, INSTALLING OR RECOVERING SUCH HARDWARE, SOFTWARE, OR DATA.

Any disputes arising between manufacturer and customer shall be governed by the laws of Santa Clara County in the State of California, USA. The State of California, County of Santa Clara shall be the exclusive venue for the resolution of any such disputes. Super Micro's total liability for all claims will not exceed the price paid for the hardware product.

FCC Statement: This equipment has been tested and found to comply with the limits for a Class A digital device pursuant to Part 15 of the FCC Rules. These limits are designed to provide reasonable protection against harmful interference when the equipment is operated in a commercial environment. This equipment generates, uses, and can radiate radio frequency energy and, if not installed and used in accordance with the manufacturer's instruction manual, may cause harmful interference with radio communications. Operation of this equipment in a residential area is likely to cause harmful interference, in which case you will be required to correct the interference at your own expense.

California Best Management Practices Regulations for Perchlorate Materials: This Perchlorate warning applies only to products containing CR (Manganese Dioxide) Lithium coin cells. Perchlorate Material-special handling may apply. See <http://www.dtsc.ca.gov/hazardouswaste/perchlorate/> for further details.

Manual Revision 1.0d

Release Date: December 5, 2016

Unless you request and receive written permission from Super Micro Computer, Inc., you may not copy any part of this document.

Information in this document is subject to change without notice. Other products and companies referred to herein are trademarks or registered trademarks of their respective companies or mark holders.

Copyright © 2016 by Super Micro Computer, Inc.
All rights reserved.
Printed in the United States of America

Revision History

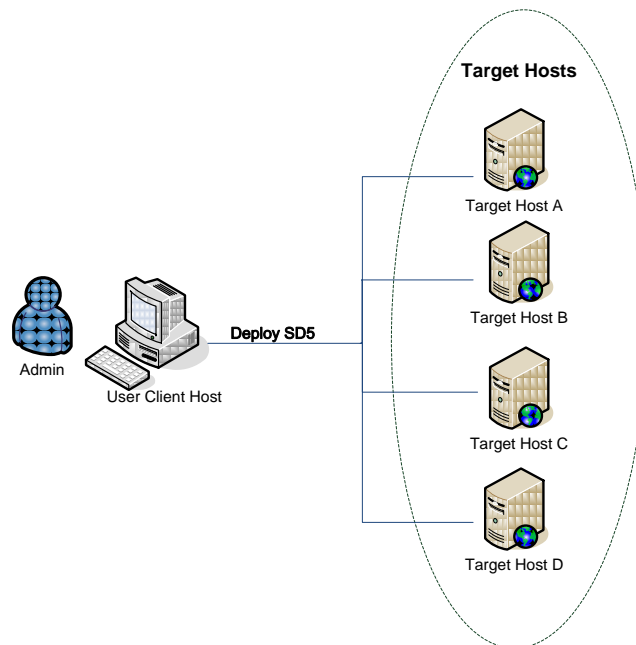
Date	Rev	Description
Feb-23-2013	1.0	1. Created User's Guide.
Jul-22-2013	1.0a	1. Changed product name of SSM Agent to SuperDoctor 5 (SD5).
Aug-25-2014	1.0b	1. Changed document layout and Supermicro logo.
May-30-2016	1.0c	1. Added notes for install.bat. 2. Changed the commands of installing SD5 and checking service status.
Dec-5-2016	1.0d	1. Changed figure and fixed typos.

Contents

1	Introduction	5
2	Prerequisites	6
2.1	Downloading PsTools	6
2.2	Preparing Deployment Files	6
3	Getting Started	7
3.1	Editing the Silent Mode Installation File	7
3.2	Creating install.bat to Install SD5	7
3.3	Creating an Installation Package	7
3.4	Creating hosts.txt File	14
3.5	Starting Deployment	15
	Contacting Supermicro	16

1 Introduction

SuperDoctor 5 can be configured to run on one central host (the “user client host”) and then be deployed to multiple hosts (the “target hosts”). The deployment program on the user client host will connect to target hosts, copy the installation files and begin installation without any user input. In this document we will guide you through the steps to remotely deploy SuperDoctor 5 to multiple systems running on Windows.



2 Prerequisites

2.1 Downloading PsTools

Psexec is part of PsTools, a suite of command-line tools that assist in managing local and remote systems. To remotely deploy SuperDoctor 5 to multiple systems, Psexec must be first installed on the user client host. To install Psexec, download and unzip PsTools from

<http://download.sysinternals.com/files/PSTools.zip>

2.2 Preparing Deployment Files

Before deploying SuperDoctor 5, you need to put both **SD5.exe** and **agent.cfg** on the user client host. You can find these two files on the installation DVD or our web site.

File name	Description
SD5.exe Note that it's recommended to rename the installer (e.g., SuperDoctor5Installer.exe) to a shorter name (e.g., SD5.exe) on Windows.	SuperDoctor 5 installer program
agent.cfg Note that it's recommended to rename the silent mode installation file (e.g., installer_agent.properties) to a shorter name (e.g., agent.cfg) on Windows.	Silent mode installation file

3 Getting Started

3.1 Editing the Silent Mode Installation File

The silent mode installation file (e.g., agent.cfg) is a property file that contains the necessary SuperDoctor 5 installation settings.

Most users can change the USER_INSTALL_DIR attribute to specify the installation. For details on this method, see *2.1.3 Silent Mode Installation* in *SuperDoctor 5 User's Guide*.

3.2 Creating install.bat to Install SD5

Open a text editor on Windows and create a file named install.bat. This file contains

SD5.exe -i silent -f agent.cfg



Note: The contents of install.bat may vary due to different uses. For example, if you want to remove the previously installed SD5 before installation, you can use the following command to uninstall in silent mode first.

"[previous SD5 install folder]\Uninstall\Uninstall.exe" -i silent

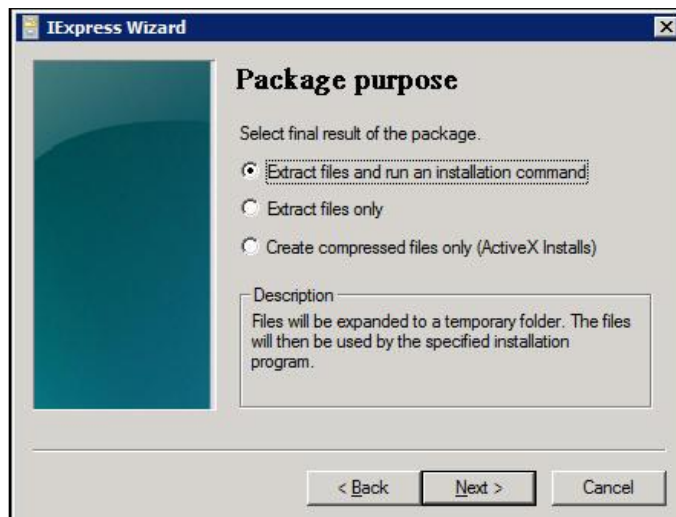
3.3 Creating an Installation Package

Now you need to create an independent executable file including SD5.exe, agent.cfg and install.bat. With iExpress, simply create an installation package of self-extracting files. Follow these steps:

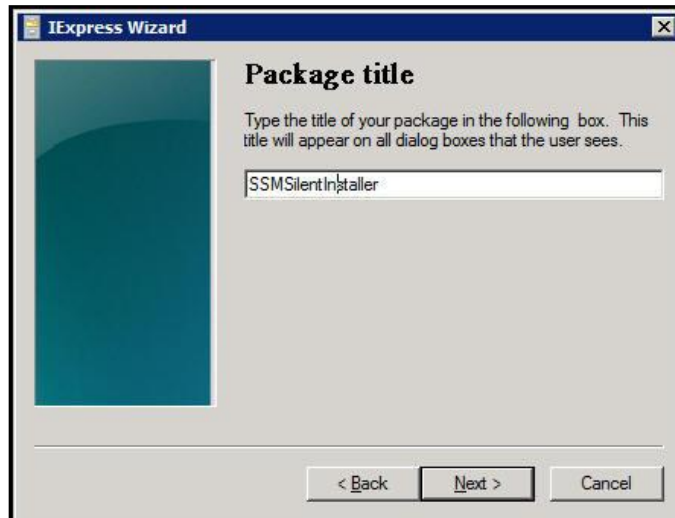
1. Click the **Start button** and type "iexpress" in the search field.
2. In the dialogue box, select **Create new Self Extraction Directive file** and click **Next**.



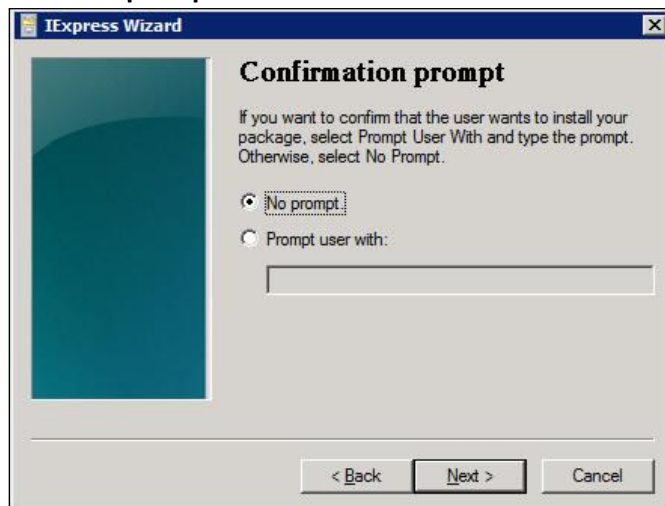
3. Select **Extract Files and run an installation command** and click **Next**.



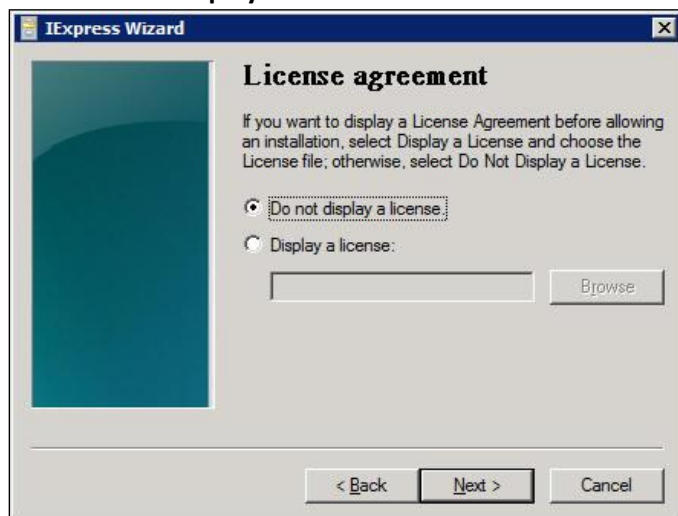
-
4. Enter your package title and click **Next**.



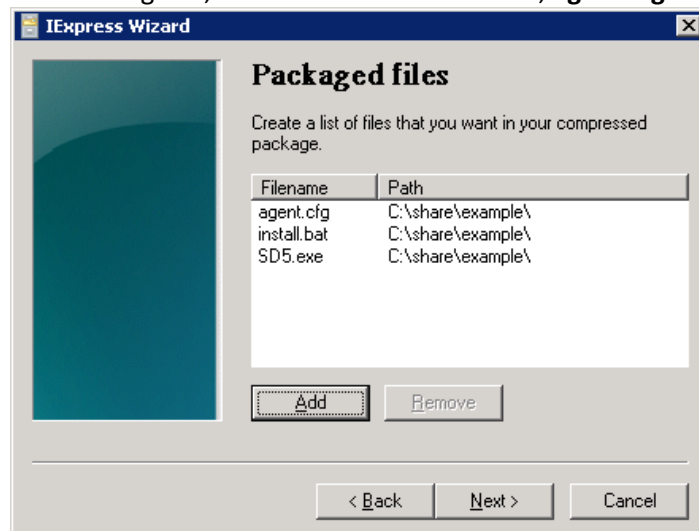
5. Select **No prompt** and click **Next**.



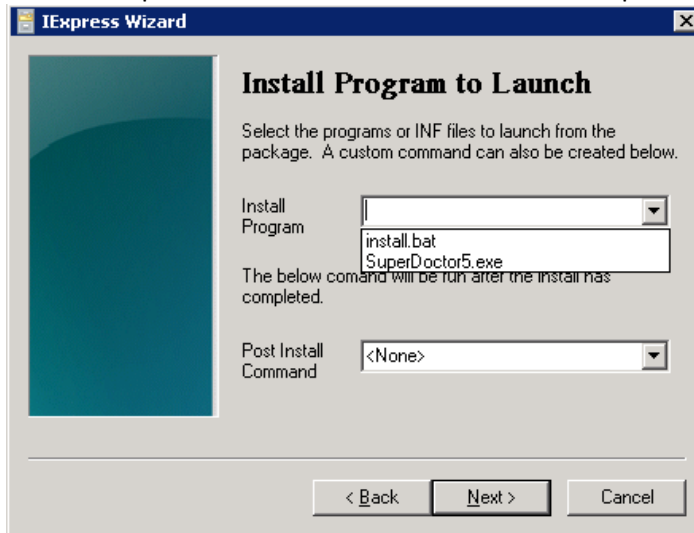
6. Select **Do not display a license** and click **Next**.



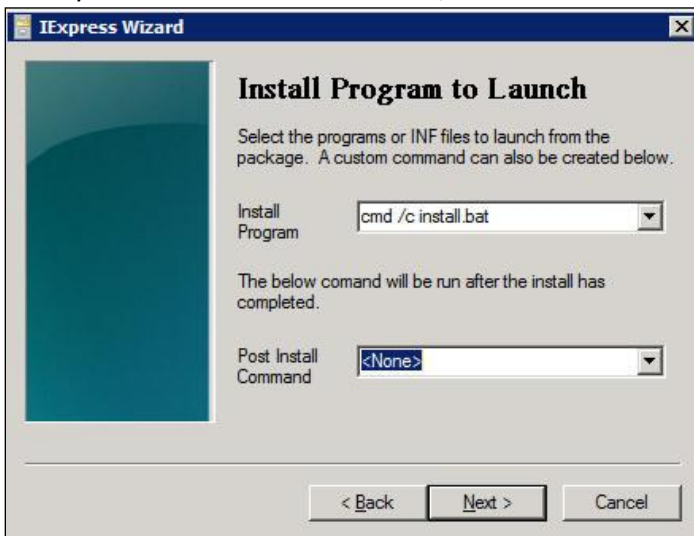
7. In the dialog box, click **Add** to select **SD5.exe**, **agent.cfg** and **install.bat**. Then click **Next**.



8. Use the dropdown menu to select **install.bat** as the primary program for installation.



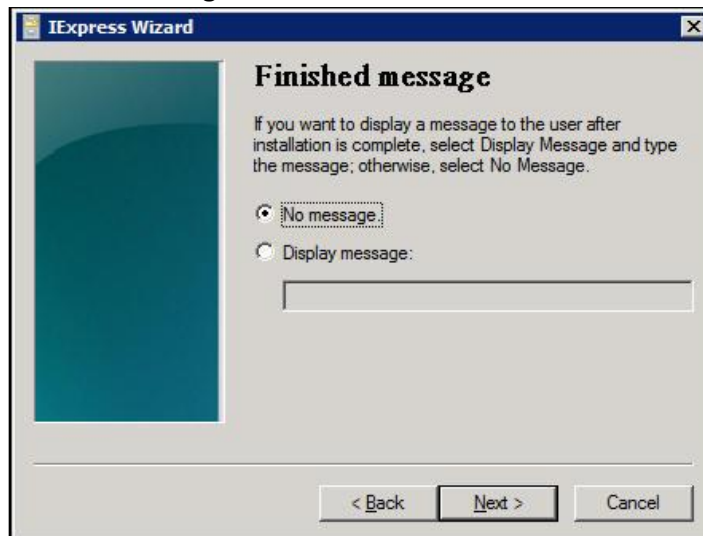
9. Modify the name in the field to **cmd /c install.bat** and click **Next**.



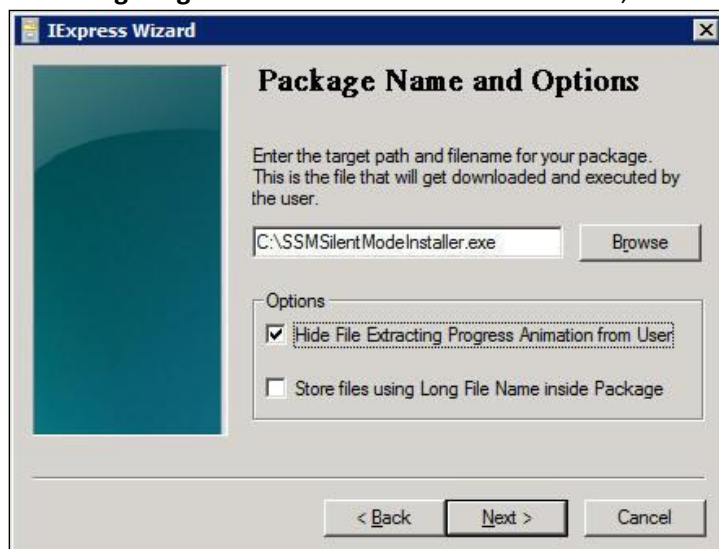
10. Select **Hidden** and click **Next**.



11. Select **No message** and then click **Next**.



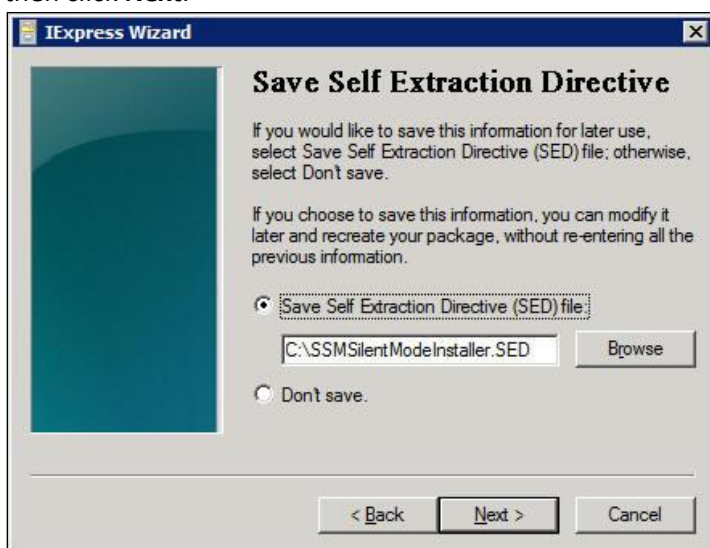
12. Type a filename with an executable file extension (e.g., C:\SSMSilentModeInstaller.exe) in the field to store the file or click **Browse** to overwrite an existing one. Meanwhile, click the **Hide File Extracting Progress Animation from User** checkbox, and then click **Next**.



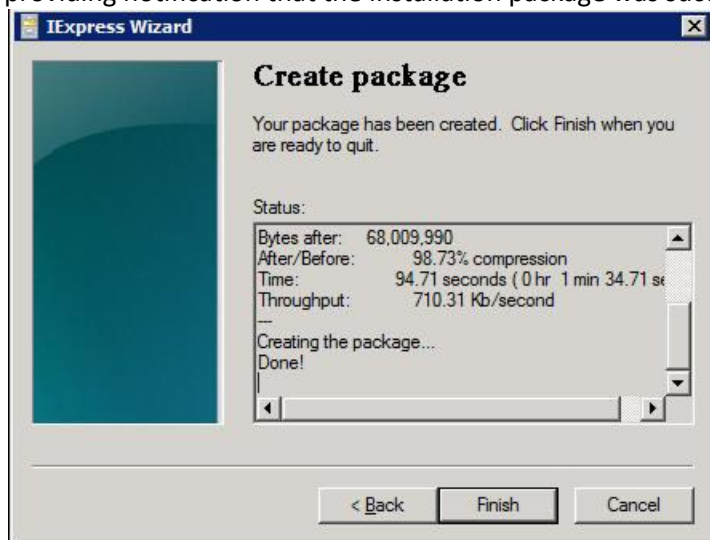
13. Select **No restart** and click **Next**.



14. If you want to save these setting for later use, select **Save Self Extraction Directive (SED) file** and then click **Next**.



15. Click **Next** again to start creating the installation package. A Windows console will open briefly providing notification that the installation package was successfully created. Click **Finish** to exit.



3.4 Creating hosts.txt File

After creating an installation package, you need to create a hosts.txt file to list all target hosts for deploying SuperDoctor 5. The example below shows what may be in the hosts.txt file:

10.134.14.30

10.134.14.35

.....

3.5 Starting Deployment

Open a terminal console on the user client host and run the following command to start deploying. Note that SSMSilentInstaller.exe (see 3.3 *Creating an Installation Package*) and hosts.txt (see 3.4 *Creating hosts.txt File*) should be placed in the same folder with the PsExec program.

```
psexec @hosts.txt -u [user account] -p [user password] -f -d -c SSMSilentInstaller.exe
```

The figure below shows that the user client host will sequentially connect to target hosts listed in the hosts.txt, copy files to remote hosts and start SuperDoctor 5 installation.

```
C:\>PsExec.exe @hosts.txt -u administrator -p 123456 -f -d -c SSMSilentModeInstaller.EXE
PsExec v1.98 - Execute processes remotely
Copyright (C) 2001-2010 Mark Russinovich
Sysinternals - www.sysinternals.com
\\10.134.14.30:
SSMSilentModeInstaller.EXE started on 10.134.14.30 with process ID 1720.
\\10.134.14.35:
SSMSilentModeInstaller.EXE started on 10.134.14.35 with process ID 5352.
```

Each deployment to a target host will respond with a process ID.

After all hosts are installed with SD5, use the following commands to remotely check if SD5 service is running.

```
C:\>PsExec.exe @hosts.txt -u administrator -p 123456 sc query sd5
PsExec v1.98 - Execute processes remotely
Copyright (C) 2001-2010 Mark Russinovich
Sysinternals - www.sysinternals.com
\\10.134.14.30:
SERVICE_NAME: sd5
        TYPE               : 10  WIN32_OWN_PROCESS
        STATE                : 4   RUNNING
                           (STOPPABLE, NOT_PAUSABLE, ACCEPTS_SHUTDOWN)
        WIN32_EXIT_CODE       : 0   (0x0)
        SERVICE_EXIT_CODE   : 0   (0x0)
        CHECKPOINT           : 0x0
        WAIT_HINT            : 0x0
sc exited on 10.134.14.30 with error code 0.
\\10.134.14.35:
SERVICE_NAME: sd5
        TYPE               : 10  WIN32_OWN_PROCESS
        STATE                : 4   RUNNING
                           (STOPPABLE, NOT_PAUSABLE, ACCEPTS_SHUTDOWN)
        WIN32_EXIT_CODE       : 0   (0x0)
        SERVICE_EXIT_CODE   : 0   (0x0)
        CHECKPOINT           : 0x0
        WAIT_HINT            : 0x0
sc exited on 10.134.14.35 with error code 0.
```

For details on parameters and features of PsExec, go to <http://technet.microsoft.com/en-us/sysinternals/bb897553>.

Contacting Supermicro

Headquarters

Address: Super Micro Computer, Inc.
980 Rock Ave.
San Jose, CA 95131 U.S.A.
Tel: +1 (408) 503-8000
Fax: +1 (408) 503-8008
Email: marketing@supermicro.com (General Information)
support@supermicro.com (Technical Support)
Web Site: www.supermicro.com

Europe

Address: Super Micro Computer B.V.
Het Sterrenbeeld 28, 5215 ML
's-Hertogenbosch, The Netherlands
Tel: +31 (0) 73-6400390
Fax: +31 (0) 73-6416525
Email: sales@supermicro.nl (General Information)
support@supermicro.nl (Technical Support)
rma@supermicro.nl (Customer Support)
Web Site: www.supermicro.nl

Asia-Pacific

Address: Super Micro Computer, Inc.
3F, No. 150, Jian 1st Rd.
Zhonghe Dist., New Taipei City 235
Taiwan (R.O.C)
Tel: +886-(2) 8226-3990
Fax: +886-(2) 8226-3992
Email: support@supermicro.com.tw
Web Site: www.supermicro.com.tw